

6013 Greeley Blvd



Welcome



RE/MAX



Bedroom 2, 3 & 4

- Plush Carpeting Over Hardwoods
- Generous Closet Space
- Light Filled Windows

Updated 2nd Full Bath

- Dual Sink Vanity
- Ceramic Tile Floor
- Tub/Shower with Ceramic Tile Surround
- Brass Bath Fixtures and Lighting



Exterior

- Over-Sized Two Car Garage
- Covered Front Porch
- Brick and Siding Exterior
- Professional Landscaping
- Spacious Backyard with Towering Hardwoods and Stone Garden Beds
- Relaxing Covered Brick Patio



Location

- Minutes to The Fairfax County Parkway, The Metro, The VRE, Route I-95/495, all other Major Commuter Routes and One Block From Bus Stop
- Close to many Local Restaurants, Shops, Boutiques and Entertainment
- Walk to Accotink Park



Community: Cardinal Forest

Model: the Squire

Lot Size: 12,448 (.29 Acre)

Taxes: \$4,962

Heat: Gas

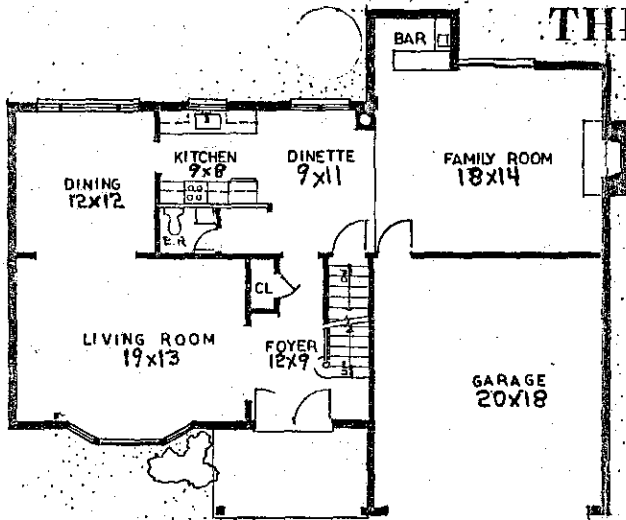
Hot Water: Gas

Water/Sewer: Public

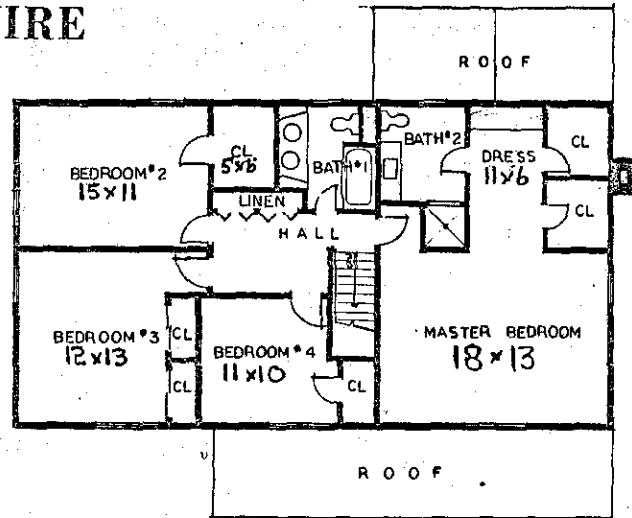
Fairfax County Schools

- Cardinal Forest Elementary
- Irving Middle
- West Springfield High

THE SQUIRE



FIRST FLOOR PLAN



SECOND FLOOR PLAN

Lavish comfort in a 4 bedroom - 2½ bath colonial

TWO CAR GARAGE

CENTRAL AIR-CONDITIONING

ENTRANCE FOYER

ELEGANT DINING ROOM

LUXURY WOOD PANELED FAMILY ROOM

Stone fireplace

Raised hearth

Wet bar

Beamed ceilings

Sliding glass doors

GASLIGHT ON LAWN

BASEMENT

DOUBLE DOOR ENTRANCE

ELEGANT LIVING ROOM WITH BAY WINDOW

ALL ELECTRIC G.E. KITCHEN

14 Cubic ft. frost free refrigerator

Double oven and range

Luxurious wood cabinets

Dishwasher and disposal

Spacious pantry off kitchen

Separate breakfast area

SPACIOUS MASTER SUITE

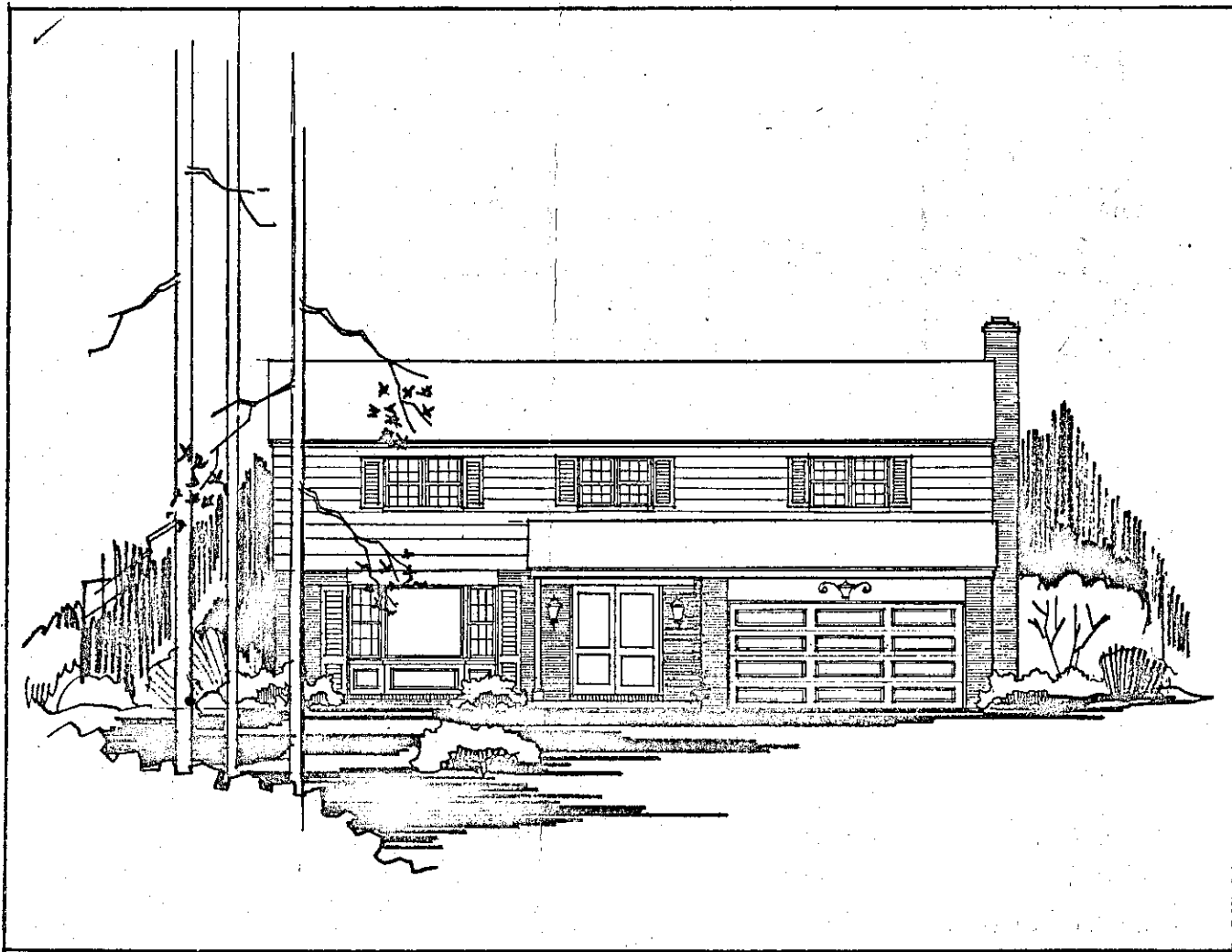
Separate dressing room

Full bath

Walk-in-closets

All room sizes approximate

THE SQUIRE



Sales by Routh Robbins - 451-2500

Appliances - General Electric

CARRLEIGH PARKWAY

(80' WIDE)

N.75°58'00"E

R=35.00'
A=54.98'

NORTH

24

25

S.29°10'10"E - 80.92'

10
12,448 sq'

N.59°28'00"E - 146.38'

S.55°09'00"W - 141.41'

Conc. Base
4.3' x 2.7'

59.8'
between
houses

Chimney
6.1' x 2.1'

Open Porch
12.0' x 6.1'

11.0'
7.1'
28.6'

17.8'

31.4'
between
houses

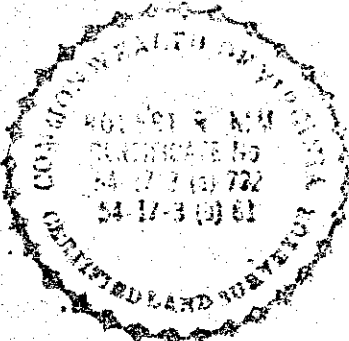
Open Porch
12.6' x 7.1'

Asphalt
Drive

R=1216.20'
A=91.63'

GREELEY BLVD.

(60' WIDE)



HOUSE LOCATION SURVEY

LOT 10

SECTION SEVEN

CARDINAL FOREST

FALLS CHURCH MAGISTERIAL DISTRICT

FAIRFAX COUNTY, VIRGINIA

Scale: 1" = 50'

October 9, 1967

CARROLL-KIM AND ASSOCIATES
PROFESSIONAL ENGINEERS AND LAND SURVEYORS
Springfield, Virginia

Certified correct: Robert R. Kim