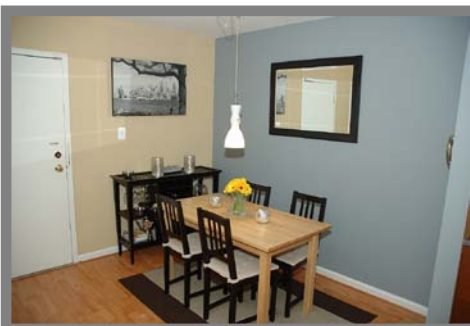
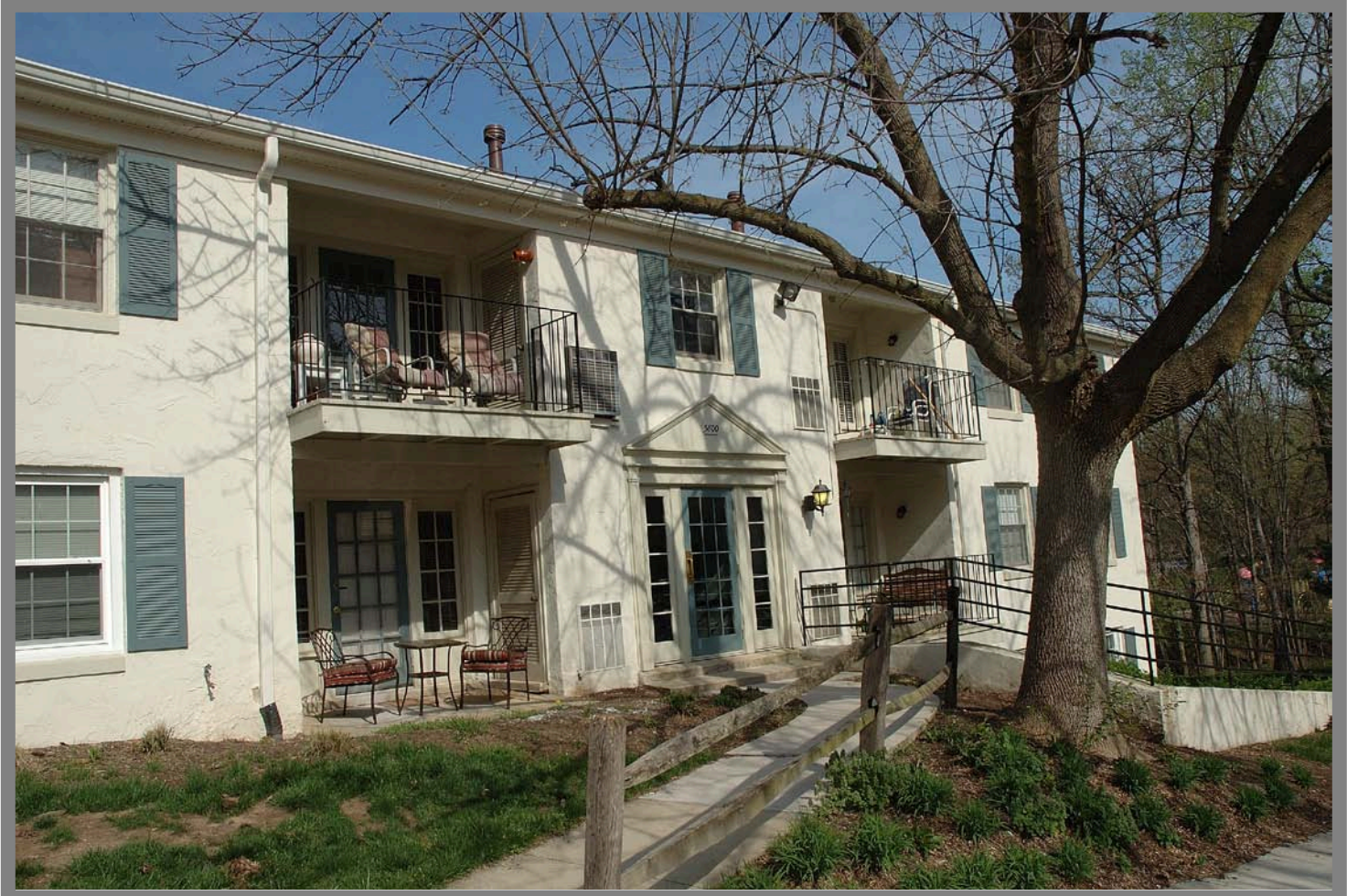


5800 Torington Dr., #M



Bruce & Tanya

RE/MAX Choice

Office 703-239-2525

Cell 703-963-8170

Awarded #1 Re/Max Team in VA 2009

BruceTanya@aol.com

www.BruceandTanya.com



Special Features

Sunlit Living Room

- Upgraded laminate flooring ('05)
- Outside access to patio

Adjacent Dining Area

- Upgraded laminate flooring ('05)

Efficiently-Designed Kitchen

- Upgraded laminate flooring ('05)
- Streamlined cabinetry
- Smooth-textured countertops
- New stainless steel appliances include: G.E. refrigerator/freezer, G.E. dishwasher, G.E. range and a built-in G.E. microwave ('05)
- Halogen track lighting

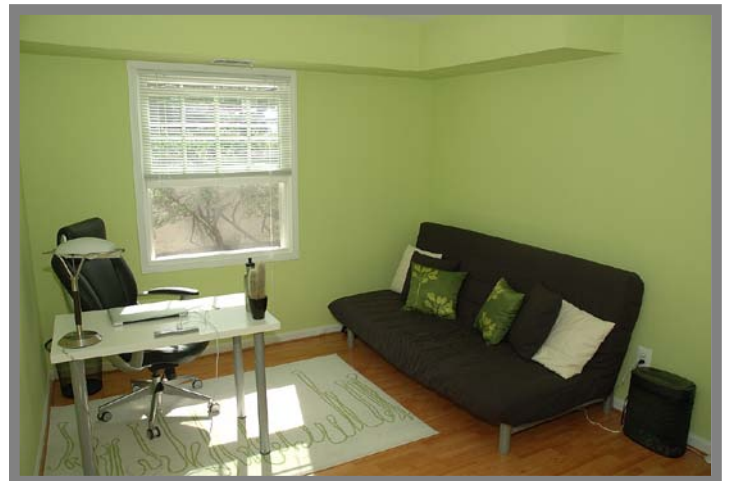


Master Bedroom

- Upgraded laminate flooring
- Spacious his & her walk-in closet
- Separate access to full bath

2nd Bedroom

- Upgraded laminate flooring
- Large double-door closet



Full Bath

- Designer ceramic-tiled flooring
- White vanity and tub with shower

Powder Room

- Designer ceramic-tiled flooring and white vanity

Laundry Facilities

- Stacked G.E. washer and dryer





Community: Cardinal Forest

Year Built: 1968

Annual Taxes ('09): \$1,817.00

Monthly Condo Fee: \$261.00 (fee includes water, gas, tennis and pool)

Systems

- Gas heating, central air, security system, gas hot water heater, public water and sewer.

Ideal Location

- Close to Old Keene Mill Road, the Fairfax County Parkway, the VRE, the Beltway & Interstate Route 95.

Fairfax County Schools

- Cardinal Forest Elementary
- Washington Irving Middle
- West Springfield High

Distinctive Exterior Features

- Condominium with stucco exterior
- Thermopane windows
- General parking
- Relaxing patio

