

# 8411 Willow Forge Road, Springfield



## Bruce & Tanya

RE/MAX Choice

Office 703-239-2525

Cell 703-963-8170

Awarded #1 Re/Max Team in VA 2009

[BruceTanya@aol.com](mailto:BruceTanya@aol.com)

[www.BruceandTanya.com](http://www.BruceandTanya.com)



# Special Features

## Gracious Foyer

- Gracefully-curved staircase

## Spacious Living Room

- Golden-oak hardwood flooring
- Room-size bay window



## Formal Dining Room

- Golden-oak hardwood flooring
- Sunlit bay window
- Colonial chair railing



## Private Library / Additional Bedroom

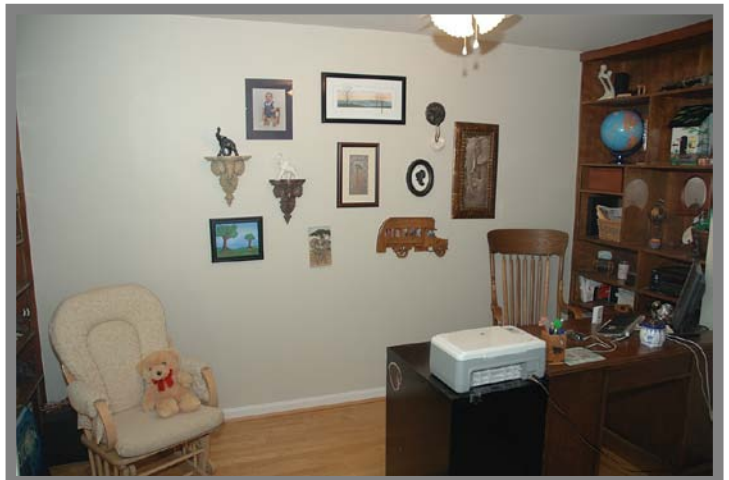
- Golden-oak hardwood flooring
- Floor-to-ceiling built-ins
- Well-placed ceiling fan

## Updated Powder Room

- Ceramic-tiled flooring
- Maple vanity

## Eat-In Kitchen

- Oak-trimmed cabinetry
- Smooth-textured countertops
- Light-capturing bay window
- Ceiling fan and under-cabinet lighting
- Quality appliances include: G.E. side-by-side refrigerator/freezer, Frigidaire dishwasher, G.E. range and a built-in G.E. microwave
- Additional pantry space
- Generous table space



## Upper Level

### Master Bedroom Suite

- Golden-oak hardwood flooring
- Well-placed ceiling fan
- Unique mirrored dressing room with his & her organizer closets



### **Remodeled Master Bath**

- Designer ceramic-tiled flooring
- Oversized shower with 2 spray heads
- Deep whirlpool tub



### **Two Additional Bedrooms**

- Golden-oak hardwood flooring
- Double-door or walk-in closet
- One bedroom affords a ceiling fan

### **Updated Full Guest Bath**

- Ceramic-tiled flooring
- White vanity
- Tub with shower

### **Floored Attic on Uppermost Level**

- Additional storage space

### **Remodeled Walk-Out Lower Level Daylit Family Room**

- Upgraded laminate flooring
- Heart-warming brick (gas) fireplace
- Wired for surround sound
- Wired for flat-panel HDTV
- Easy outside access to backyard patio



### **Adjoining Fitness Room / Home Office**

- Upgraded laminate flooring

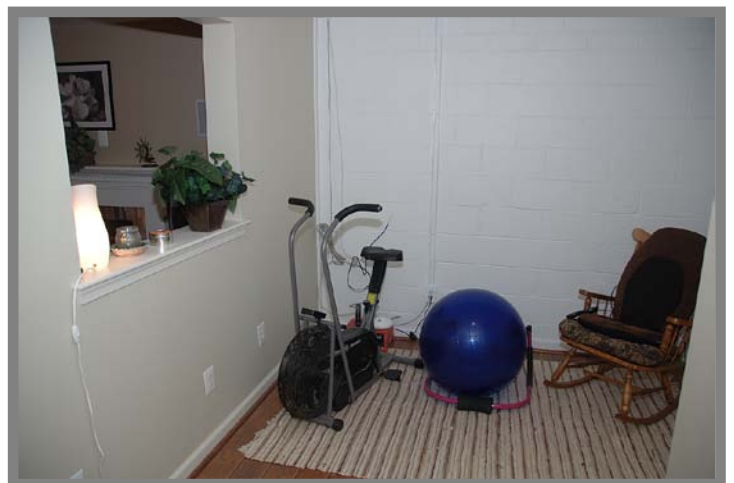
### **4<sup>th</sup> Bedroom**

- Upgraded laminate flooring
- Spacious walk-in closet
- Separate outside entrance



### **Storage / Utility Room**

- Abundance of storage space
- Laundry facilities



Information deemed reliable, but not guaranteed.

**Community:** Charlestown  
**Year Built:** 1969  
**Model:** The Hermitage  
**Lot Size:** 1,890 sq. ft.  
**Annual Taxes ('09):** \$3,966.00

### Systems

- Gas heating, central air conditioning, Aprilaire humidifier, electric hot water heater, public water and sewer.

### Ideal Location

- Close to the VRE, Interstate Route 95, the Beltway and all major commuter routes.

### Fairfax County Schools

- Cardinal Forest Elementary
- Washington Irving Middle
- West Springfield High

### Distinctive Exterior Features

- Spacious End Townhome (only home in community with three sunlit bay windows)
- All brick with new Andersen thermopane windows '05
- Off-street reserved parking
- Professionally landscaped yard
- Georgetown-style fenced backyard with brick patio (new wooden fence)
- Garden tool storage shed

