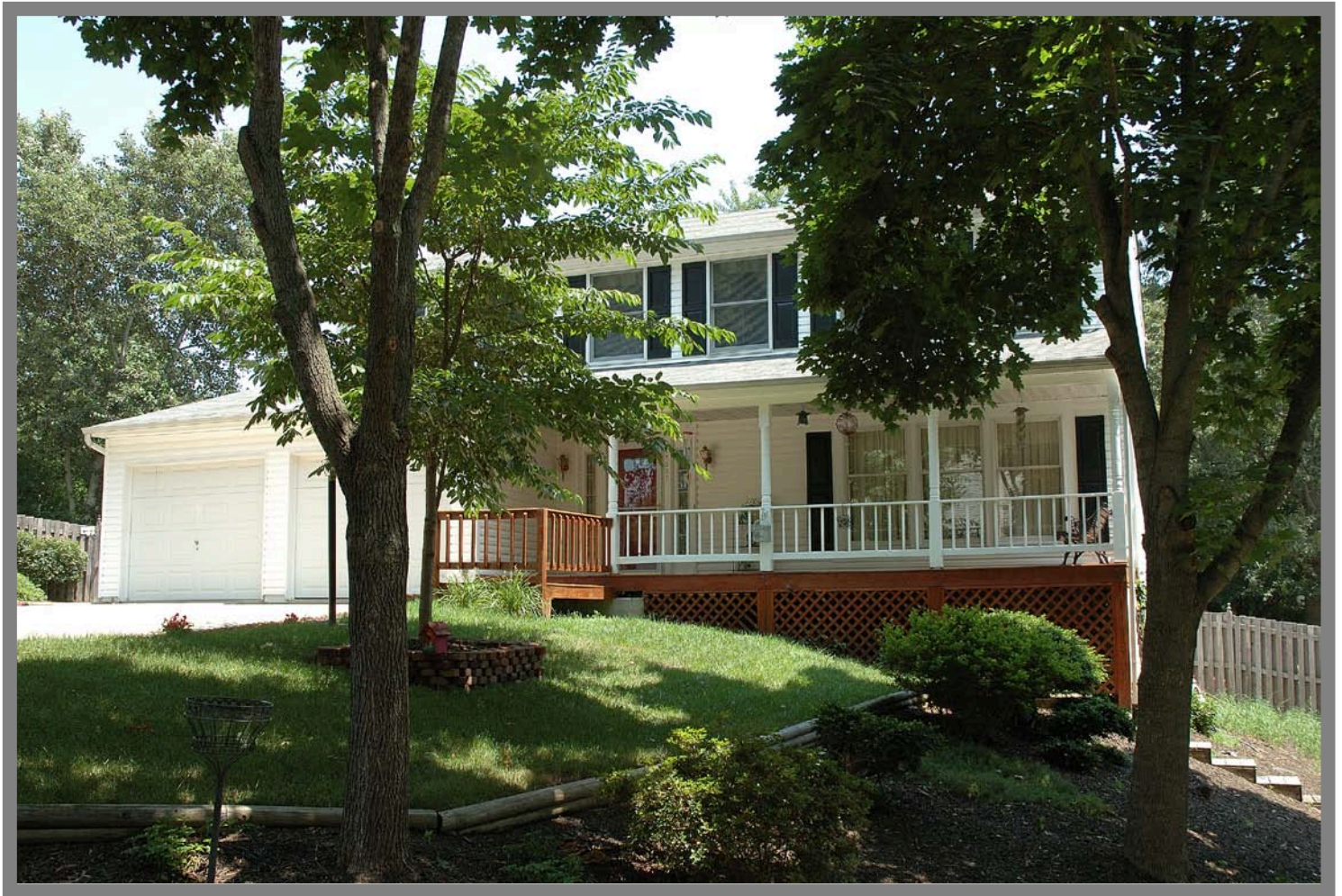


# 7557 Cloud Court, Springfield



## Bruce & Tanya

RE/MAX Choice

Office 703-239-2525

Cell 703-963-8170

Awarded #1 Re/Max Team in VA 2009

[BruceTanya@aol.com](mailto:BruceTanya@aol.com)

[www.BruceandTanya.com](http://www.BruceandTanya.com)



# Special Features

## Gracious Foyer

- Upgraded Pergo flooring

## Traditional Living Room

- Plush carpeting
- Light-filled triple windows
- Colonial crown moulding

## Formal Dining Room

- Plush carpeting and colonial mouldings
- Sunlit floor-to-ceiling window

## Main-Level Powder Room

- Upgraded Pergo flooring
- Classic pedestal sink

## Upgraded Kitchen

- Upgraded Pergo flooring
- Cathedral-panel cherry cabinetry
- Smooth-textured countertops
- Recessed lighting
- Designer ceramic-tiled backsplash
- Quality appliances include: G.E. Profile side-by-side refrigerator/freezer, Maytag electronic dishwasher, Amana range & a built-in Whirlpool microwave
- Daily planning desk
- Separate breakfast countertop

## Adjoining Family Room

- Plush carpeting
- Floor-to-ceiling brick fireplace
- Halogen track lighting
- Pella sliding glass doors afford easy outdoor access to sundeck





## Upper Level

### Master Bedroom Suite

- Plush carpeting
- Hampton Bay ceiling fan
- Remodeled Master Dressing Area '10
  - Comfort-height maple vanity with dual sinks
  - His & her cedar-lined walk-in closet

### Renovated Master Bath '10

- Designer flooring & shower enclosure
- Comfort-height maple vanity

### Three Additional Bedrooms

- Plush carpeting
- Double-door closets
- Two bedrooms offer ceiling fans

### Updated Full Guest Bath '10

- Designer flooring
- Comfort-height maple vanity
- Tub enclosure with shower



## Walk-Out Lower Level

### Expansive Entertainment Room

- Berber carpeting
- Recessed lighting
- French doors to sunroom

### Skylit Sunroom / In-Home Office

- Tiled flooring and ceiling fan
- Sliding glass doors for easy outdoor access to spacious backyard



### 3<sup>rd</sup> Full Bath

- Ceramic-tiled flooring
- Pedestal sink
- Tub with shower

### Separate Laundry Room

### Storage Room

- Abundance of storage space



**Community:** Middle Valley

**Model:** The McHenry

**Year Built:** 1981

**Lot Size:** 13,166 sq. ft.

**Annual Taxes ('09):** \$4,849.00

### Systems

- Heat pump, central air conditioning, electric hot water heater, public water and sewer.

### Ideal Location

- Close to the Fairfax County Parkway, Old Keene Mill Road, the Metro, the VRE, the Beltway as well as Interstate Route 95.

### Fairfax County Schools

- Hunt Valley Elementary
- Washington Irving Middle
- West Springfield High

### Distinctive Exterior Features

- Vinyl siding with front porch
- Front-load two car garage
- Quiet private drive
- Spacious and fenced backyard with towering shade trees
- Large main-level sundeck
- Garden tool storage shed

