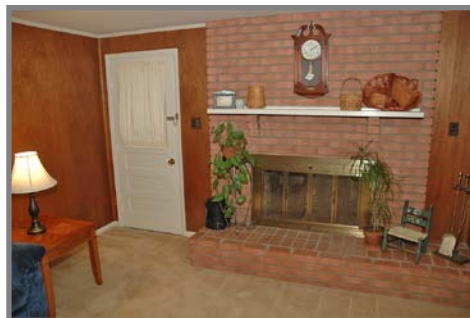


6404 Charnwood Street, Springfield



Bruce & Tanya

RE/MAX Choice

Office 703-239-2525

Cell 703-963-8170

Awarded #1 Re/Max Team in VA 2009

BruceTanya@aol.com

www.BruceandTanya.com



Special Features

Garden Level Entry

Gracious Foyer

- Designer ceramic-tiled flooring
- Colonial chair railing with wainscoting

Relaxing Entertainment Room

- Designer ceramic-tiled flooring
- Colonial chair railing

Updated Powder Room

- Designer ceramic-tiled flooring
- White vanity

Laundry Facilities

- Maytag washer & dryer

Main Level

Sunlit Living Room

- Brazilian cherry flooring
- Light-capturing bay window
- Colonial crown moulding
- Ceiling speakers

Traditional Dining Room

- Brazilian cherry flooring
- Colonial crown moulding
- Pass-thru from kitchen

Updated Formal Powder Room

- Designer ceramic-tiled flooring
- Classic pedestal sink

Adjoining Family Room (to kitchen)

- Brazilian cherry flooring
- Custom built-in desk with cabinets
- Recessed lighting and ceiling speaker
- French doors afford easy outside access to backyard patio



Remodeled Kitchen

- Brazilian cherry flooring
- Raised-panel white cabinetry
- 'Absolute Black' granite countertops
- Ceramic-tiled backsplash
- Food preparation peninsula easily doubles as a breakfast countertop
- Stainless steel appliances include: Whirlpool 'Ikea' side-by-side refrigerator/freezer, Bosch electronic dishwasher, KitchenAid gas range and a built-in KitchenAid microwave
- Recessed lighting and ceiling speaker
- Light-filled windows with cafe table space

Upper Level

Master Bedroom Suite

- Brazilian cherry flooring
- Vaulted ceiling with ceiling fan
- Separate his & her walk-in closets

Updated Private Master Bath

- Designer ceramic-tiled flooring
- White vanity with dual sinks
- Tub with shower

Two Additional Bedrooms

- Brazilian cherry flooring
- Both bedrooms with ceiling fans
- Good closet space

Updated Full Guest Bath

- Designer ceramic-tiled flooring
- White vanity
- Tub with shower



Community: Shadowbrook
Model: The Elmsbridge
Year Built: 1996

Lot Size: 1,761 sq. ft.
Annual Taxes ('10): \$3,669.00
Monthly HOA Fee: \$96.00

Systems

- Gas heating, central air conditioning, gas hot water heater, public water and sewer.

Fairfax County Schools

- Saratoga Elementary
- Key Middle
- Robert E. Lee High

Perfect Location

- Close to the Fairfax County Parkway, Interstate Route 95, the Beltway, the Metro and all major commuter routes.

Distinctive Exterior Features

- Interior Townhome with brick front
- Front-load one car finished garage
- Professionally landscaped yard
- Fenced backyard with paver patio
- Mature trees provide year-round wooded views with lasting privacy

