

# 6817 Field Master Drive, Springfield



## Bruce & Tanya

RE/MAX Choice

Office 703-239-2525

Cell 703-963-8170

Top 3 Re/Max Team in VA 2010

[BruceTanya@aol.com](mailto:BruceTanya@aol.com)

[www.BruceandTanya.com](http://www.BruceandTanya.com)



## Special Features

### Entry Foyer

- Polished marble flooring
- Introduces a flowing floor plan

### Traditional Living Room

- Golden-oak hardwood flooring
- Light-filled picture window

### Formal Dining Room

- Golden-oak hardwood flooring
- Sunlit double windows

### Main-Level Powder Room

- Polished marble flooring
- White vanity

### Efficiently-Designed Kitchen

- Ceramic-tiled flooring
- Raised-panel oak cabinetry
- Efficient wraparound countertop
- Daily planning desk
- Well-placed ceiling fan
- Quality appliances include:  
Kenmore refrigerator/freezer,  
Kenmore dishwasher, Kenmore  
range and a built-in microwave
- Adjoining table space
- Andersen sliding glass doors  
afford easy access to the  
backyard

### Relaxing Family Room

- Plush carpeting
- Heart-warming brick  
fireplace
- Exposed-beam ceiling
- Light-filled picture window
- Outdoor access to carport



## Upper Level

- Hallway with laundry chute

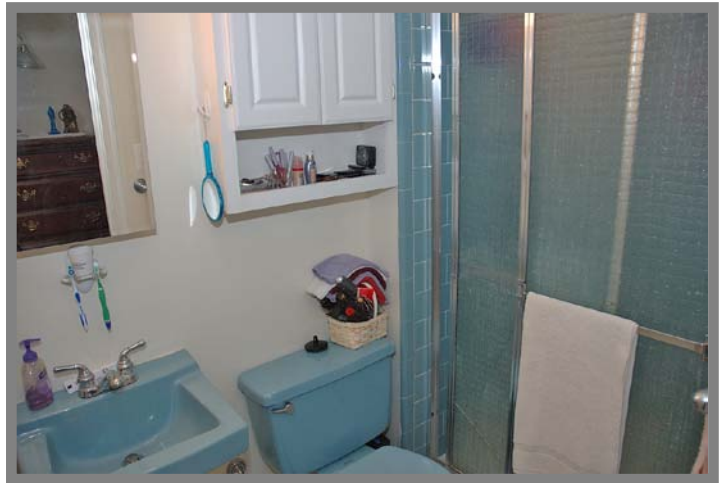
### **Master Bedroom Suite**

- Plush carpeting and ceiling fan
- Generous sitting area
- His & her walk-in closet



### **Private Master Bath**

- Ceramic-tiled flooring
- Shower enclosure



### **Three Additional Bedrooms**

- Plush carpeting
- Double-door closets
- All bedrooms with a ceiling fan

### **Full Guest Bath**

- Ceramic-tiled flooring
- White vanity and tub with shower

## Finished Lower Level

### **L-Shaped Entertainment Room**

- Plush carpeting



### **Fitness Room**

- Wall-to-wall carpeting

### **Storage / Utility Room**

- Abundance of storage space with separate walk-in storage closet
- Laundry facilities



Information deemed reliable, but not guaranteed.  
Brochures by Grin 'N Bear It, Inc. (703) 825-7530

**Community:** Orange Hunt Estates  
**Model Name:** The New Master  
**Year Built:** 1971  
**Lot Size:** 13,709 sq. ft.  
**Annual Taxes ('10):** \$4,805.00

### **Systems**

- Gas heat, central air conditioning, security system, Aprilaire humidifier, gas hot water heater, public water and sewer.

### **Ideal Location**

- Close to Old Keene Mill Road, the Fairfax County Parkway, the VRE, the Beltway & Interstate Route 95.

### **Fairfax County Schools**

- Orange Hunt Elementary
- Washington Irving Middle
- West Springfield High

### **Distinctive Exterior Features**

- Brick and vinyl siding exterior with towering columned portico
- One car carport with additional off-street driveway parking
- Professionally landscaped yard with custom brick walkway
- Fenced backyard with patio
- Inground pool with new vinyl liner
- Garden-level deck & backyard shed

