

520 John Carlyle St., #323, Alexandria



Bruce & Tanya

RE/MAX Choice

Office 703-239-2525

Cell 703-963-8170

Awarded #1 Re/Max Team in VA 2009

BruceTanya@aol.com

www.BruceandTanya.com



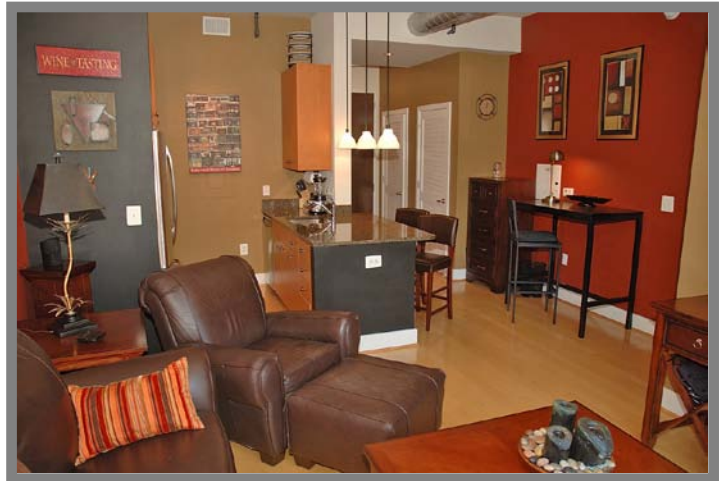
Special Features

Gracious Foyer

- Maple hardwood flooring

Sunlit Living Room

- Maple hardwood flooring
- Light-capturing window wall
- 10' volume ceiling with halogen track lighting



Efficient Designer Kitchen

- Maple hardwood flooring
- 42" streamlined maple cabinetry
- 'Tropical Brown' granite countertops
- Upgraded stainless steel appliances include: G.E. Profile range, G.E. Profile refrigerator/freezer, G.E. Profile dishwasher and a built-in G.E. Profile microwave
- Food preparation peninsula easily doubles as a breakfast countertop
- Pendant lighting



Master Bedroom

- Maple hardwood flooring
- Spacious double closets
- Sliding glass doors provide access to Juliet balcony which overlooks the courtyard below



Full Bath

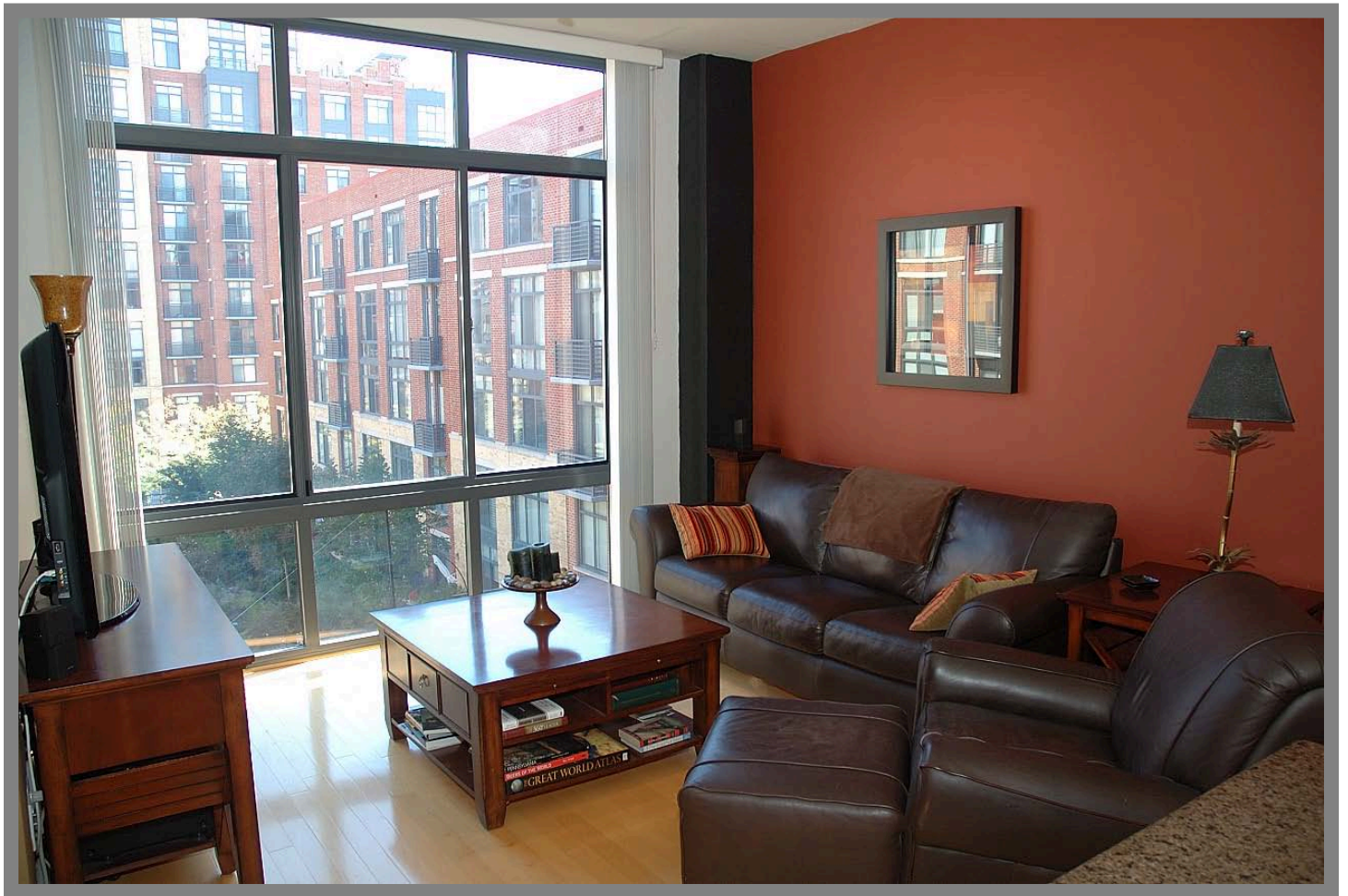
- Designer ceramic-tiled flooring
- Granite-topped maple vanity
- Deep soaking tub with shower

Laundry Facilities

- G.E. stacked washer and dryer



Information deemed reliable, but not guaranteed.
Brochures by Grin 'N Bear It, Inc. (703) 825-7530



Condos at Carlyle Square

Year Built: 2007

Annual Taxes ('10): \$2,462.00

Monthly Condo Fee: \$262.00

Systems

- Electric heating, central air, interior fire suppression system, electric hot water heater, public water and sewer.

Distinctive Exterior Features

- Brick Hi-Rise Condominium
- 24 hour secured lobby
- One underground garage space

Prime Location

- Within fingertip reach of the Metro and close to the Beltway, Interstate Route 95 as well as Old Town Alexandria, shopping and fine dining.

