

# 9659 Poindexter Court, Burke



## Bruce & Tanya

RE/MAX Choice

Office 703-239-2525

Cell 703-963-8170

Top 3 RE/MAX Team in VA 2010

[BruceTanya@aol.com](mailto:BruceTanya@aol.com)

[www.BruceandTanya.com](http://www.BruceandTanya.com)



# Special Features

## Entry Foyer

- Golden-oak hardwood flooring

## Formal Dining Room

- Golden-oak hardwood flooring
- Light-filled two-story atrium

## Powder Room

- Designer ceramic-tiled flooring

## Remodeled Kitchen '06

- Designer ceramic-tiled flooring
- Raised-panel white cabinetry
- Upgraded granite countertops
- Designer ceramic-tiled backsplash
- Quality stainless steel appliances include: Frigidaire side-by-side refrigerator/freezer, Frigidaire dishwasher and a Frigidaire range
- Bay window with table space

## 1<sup>st</sup> Upper Level

### Living Room

- Golden-oak hardwood flooring
- Marble-wrapped fireplace
- Sliding glass doors provide easy outside access to sundeck

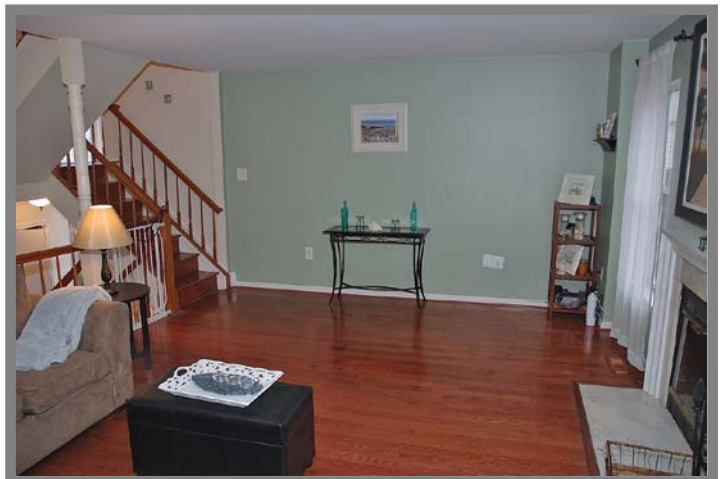
## 2<sup>nd</sup> Upper Level

### Bedrooms #2 & #3

- New plush carpeting '10
- Vaulted ceilings
- Spacious double-door closets

### Full Guest Bath

- Ceramic-tiled flooring
- White vanity
- Tub with shower



**3<sup>rd</sup> Upper Level**  
**Master Bedroom Suite**

- New plush carpeting '10
- Sunlit double windows
- Well-placed ceiling fan
- His & her walk-in organizer closet



**Private Master Bath**

- Upgraded tile flooring
- Oak vanity
- Shower enclosure



**1<sup>st</sup> Lower Level**  
**Daylit Family Room**

- New plush carpeting '10
- Well-placed ceiling fan
- Recessed lighting



**2<sup>nd</sup> Lower Level**  
**Storage Room**

- Abundance of storage space
- Laundry facilities



**Community:** Hillsdale

**Model:** The Carlysle

**Year Built:** 1986

**Lot Size:** 2,193 sq. ft.

**Annual Taxes ('10):** \$3,296.00

### Systems

- Heat pump, central air conditioning, new attic fan '10, electric hot water heater, public water and sewer.

### Quiet Location

- Close to Braddock Road, the VRE, the Fairfax County Parkway, the Beltway as well as Interstate Route 95 and Route 66.

### Fairfax County Schools

- Kings Park/Kings Glen Elementary
- Lake Braddock Middle
- Lake Braddock High

### Distinctive Exterior Features

- End Townhome
- Vinyl siding exterior
- Exterior recently repainted '09
- Beautifully landscaped yard
- Reserved doorstep parking
- Fenced backyard
- Main-level sundeck and
- Relaxing garden-level patio
- Overlooks common area

