

# Special Features

## Entry Foyer

- Designer ceramic-tiled flooring
- Leaded-glass entry ('08)

## Light-Filled Living Room

- Natural-oak hardwood flooring
- Light-filled box-bay window
- Colonial crown moulding
- Recessed lighting



## Formal Dining Room

- Natural-oak hardwood flooring
- Colonial crown moulding, chair railing and accent lighting
- Sliding glass doors provide easy outside access to main-level sundeck



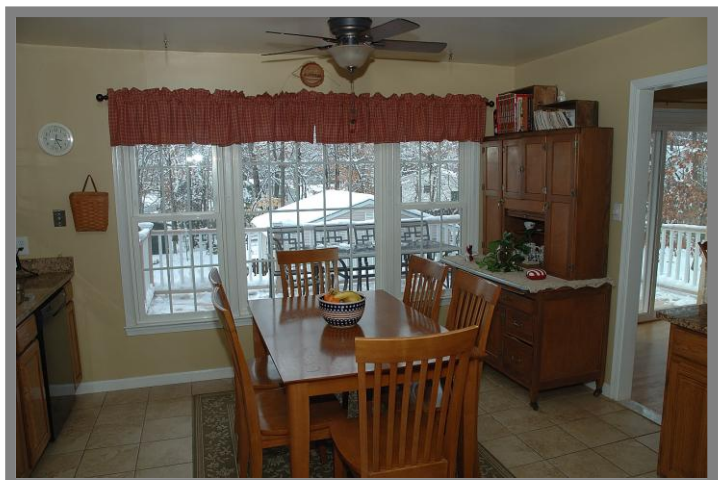
## Remodeled Kitchen ('07)

- Designer ceramic-tiled flooring
- 42" cathedral-panel oak cabinetry
- Upgraded granite countertops
- Ceramic-tiled backsplash
- Under-cabinet lighting
- Quality appliances include: Kenmore side-by-side refrigerator/freezer, Whirlpool dishwasher, Kenmore gas range, built-in Kenmore microwave and a Kenmore trash compactor
- Hampton Bay ceiling fan
- Generous table space
- Light-capturing window wall



## Master Bedroom Suite

- Plush carpeting
- Well-placed ceiling fan
- Separate his & her double-door closets



Information deemed reliable, but not guaranteed.  
Brochures by Grin 'N Bear It, Inc. (703) 825-7530

**Community:** Country Club View  
**Model:** The Carlyle  
**Year Built:** 1968  
**Lot Size:** .38 acre (16,375 sq. ft.)  
**Annual Taxes ('10):** \$5,177.00

### Systems

- Gas heating, central air, new Aprilaire humidifier ('10), new elec. hot water heater ('10), public water and sewer.

### Ideal Location

- Close to Braddock Road, the Fairfax County Parkway, the VRE as well as the Beltway, Route 66 and Interstate Route 95.

### Fairfax County Schools

- Oak View Elementary
- Robinson Middle
- Robinson High

### Distinctive Exterior Features

- Brick and siding exterior with new roof ('10)
- Towering columned portico
- New thermopane windows ('07)
- Detached two car garage ('04)
- Professionally landscaped yard with inground sprinkler system
- Fenced backyard with garden-level deck and patio
- Main-level sundeck
- Two garden tool storage sheds

