

6103A Wigmore Lane, Alexandria



Bruce & Tanya

RE/MAX Choice

Office 703-239-2525

Cell 703-963-8170

Top 3 RE/MAX Team in VA 2010

BruceTanya@aol.com

www.BruceandTanya.com



Special Features

Entry Foyer

- Designer ceramic-tiled flooring

Inviting Living Room

- Plush carpeting
- Slate-wrapped gas fireplace
- French doors provide patio access

Formal Dining Room

- Plush carpeting and crown moulding

Remodeled Kitchen ('09)

- Designer ceramic-tiled flooring
- Recessed-panel oak cabinetry
- "Blue Pearl GT" granite countertops
- Quality stainless steel appliances include: KitchenAid side-by-side refrigerator/freezer, Bosch dishwasher, G.E. Profile gas range with convection oven and a built-in G.E. Profile "Advantium" oven/microwave
- Under-cabinet halogen lighting

Separate Laundry Room

Master Bedroom Suite

- Plush carpeting and Hunter ceiling fan
- Walk-in organizer closet

Private Master Bath

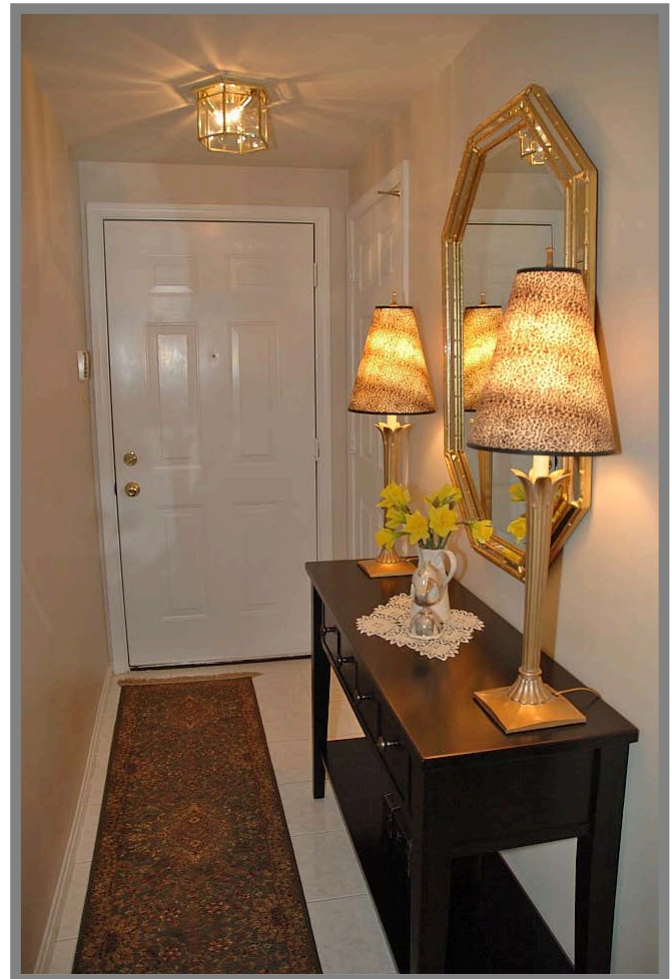
- Designer flooring
- Oak vanity with dual sinks
- Oval soaking tub and glassed-in shower

2nd Bedroom

- Plush carpeting and double closets
- Sunlit triple windows and outside access
- Separate access to full bath

Full Guest Bath

- Designer flooring
- Oak vanity and tub with shower



Information deemed reliable, but not guaranteed.
Brochures by Grin 'N Bear It, Inc. (703) 825-7530

6103 Wigmore Lane



Condo: Stratford Place at Kingstowne

Model Name: The Newcastle

Year Built: 1994

Annual Taxes ('10): \$2,862.00

Monthly Condo Fee: \$309.00

Systems

- Gas heating, central air, security system, interior fire suppression system, gas hot water heater, public water and sewer.

Ideal Location

- Close to the Fairfax County Parkway, the Metro, the Beltway as well as Interstate Route 95.

Fairfax County Schools

- Anthony Lane Elementary
- Hayfield Middle
- Hayfield High

Distinctive Exterior Features

- Garden Condominium
- Abundance of parking
- Separate storage room
- Fenced backyard with storage room
- Unique patio with slate walkway as well as year-round wooded views with lasting privacy

